



# IL-1F10 Polyclonal Antibody

<b>Catalog No</b>	YP-Ab-16078
<b>Isotype</b>	IgG
<b>Reactivity</b>	Human;Rat;Mouse;
<b>Applications</b>	WB;IHC;IF;ELISA
<b>Gene Name</b>	IL1F10
<b>Protein Name</b>	Interleukin-1 family member 10
<b>Immunogen</b>	Synthesized peptide derived from Interleukin-1 family member 10 at AA range: 101-150
<b>Specificity</b>	IL-1F10 Polyclonal Antibody detects endogenous levels of IL-1F10 protein.
<b>Formulation</b>	Liquid in PBS containing 50% glycerol, 0.5% BSA and 0.02% sodium azide.
<b>Source</b>	Polyclonal, Rabbit,IgG
<b>Purification</b>	The antibody was affinity-purified from rabbit antiserum by affinity-chromatography using epitope-specific immunogen.
<b>Dilution</b>	WB: 1/500 - 1/2000. IHC-p: 1:100-1:300. ELISA: 1/10000.. IF 1:50-200
<b>Concentration</b>	1 mg/ml
<b>Purity</b>	≥90%
<b>Storage Stability</b>	-20°C/1 year
<b>Synonyms</b>	IL1F10; FIL1T; IL1HY2; FKSG75; Interleukin-1 family member 10; IL-1F10; FIL1 theta; Interleukin-1 HY2; IL-1HY2; Interleukin-1 theta; IL-1 theta
<b>Observed Band</b>	17kD
<b>Cell Pathway</b>	Cytoplasm . Secreted . The secretion is dependent on protein unfolding and facilitated by the cargo receptor TMED10; it results in protein translocation from the cytoplasm into the ERGIC (endoplasmic reticulum-Golgi intermediate compartment) followed by vesicle entry and secretion. .
<b>Tissue Specificity</b>	Expressed in fetal skin, spleen and tonsil. Expressed mostly in the basal epithelia of skin and in proliferating B-cells of the tonsil.
<b>Function</b>	function: Binds soluble IL-1 receptor type 1.,online information:Interleukin-1 entry,similarity:Belongs to the IL-1 family.,tissue specificity:Expressed in fetal skin, spleen and tonsil. Expressed mostly in the basal epithelia of skin and in proliferating B-cells of the tonsil.,
<b>Background</b>	The protein encoded by this gene is a member of the interleukin 1 cytokine family. This gene and eight other interleukin 1 family genes form a cytokine gene cluster on chromosome 2. This cytokine is thought to participate in a network of interleukin 1 family members to regulate adapted and innate immune responses. Two alternatively spliced transcript variants encoding the same protein have been reported. [provided by RefSeq, Jul 2008],



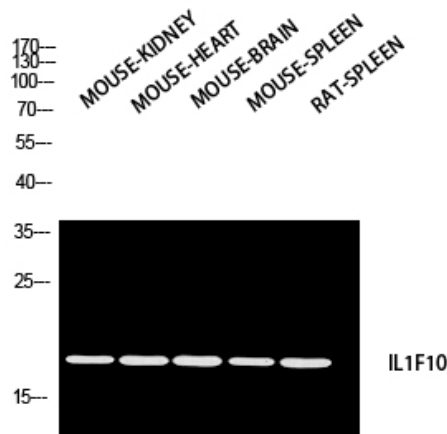
### matters needing attention

Avoid repeated freezing and thawing!

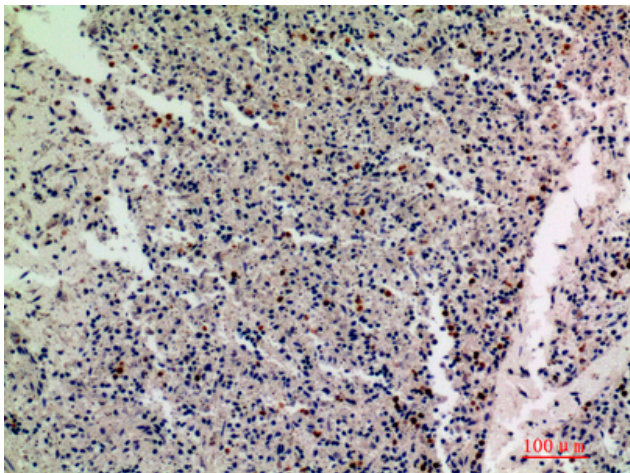
### Usage suggestions

This product can be used in immunological reaction related experiments. For more information, please consult technical personnel.

## Products Images



Western blot analysis of MOUSE-KIDNEY  
MOUSE-HEART MOUSE-BRAIN MOUSE-SPLEEN  
RAT-SPLEEN using IL1F10 antibody. Antibody was  
diluted at 1:2000. Secondary  
antibody(catalog#:RS0002) was diluted at 1:20000



Immunohistochemical analysis of paraffin-embedded  
human-spleen, antibody was diluted at 1:200